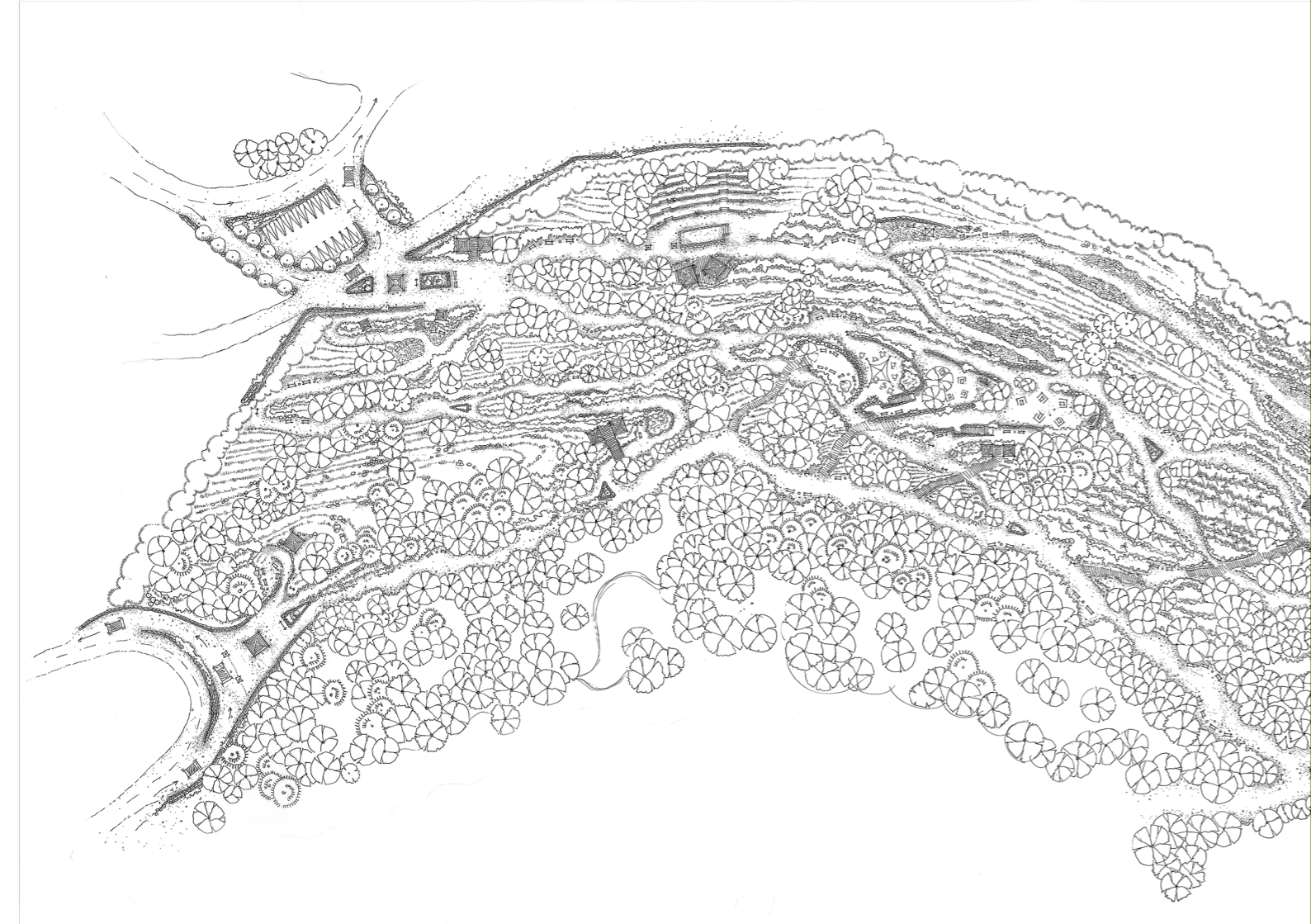


# SELECTED WORKS

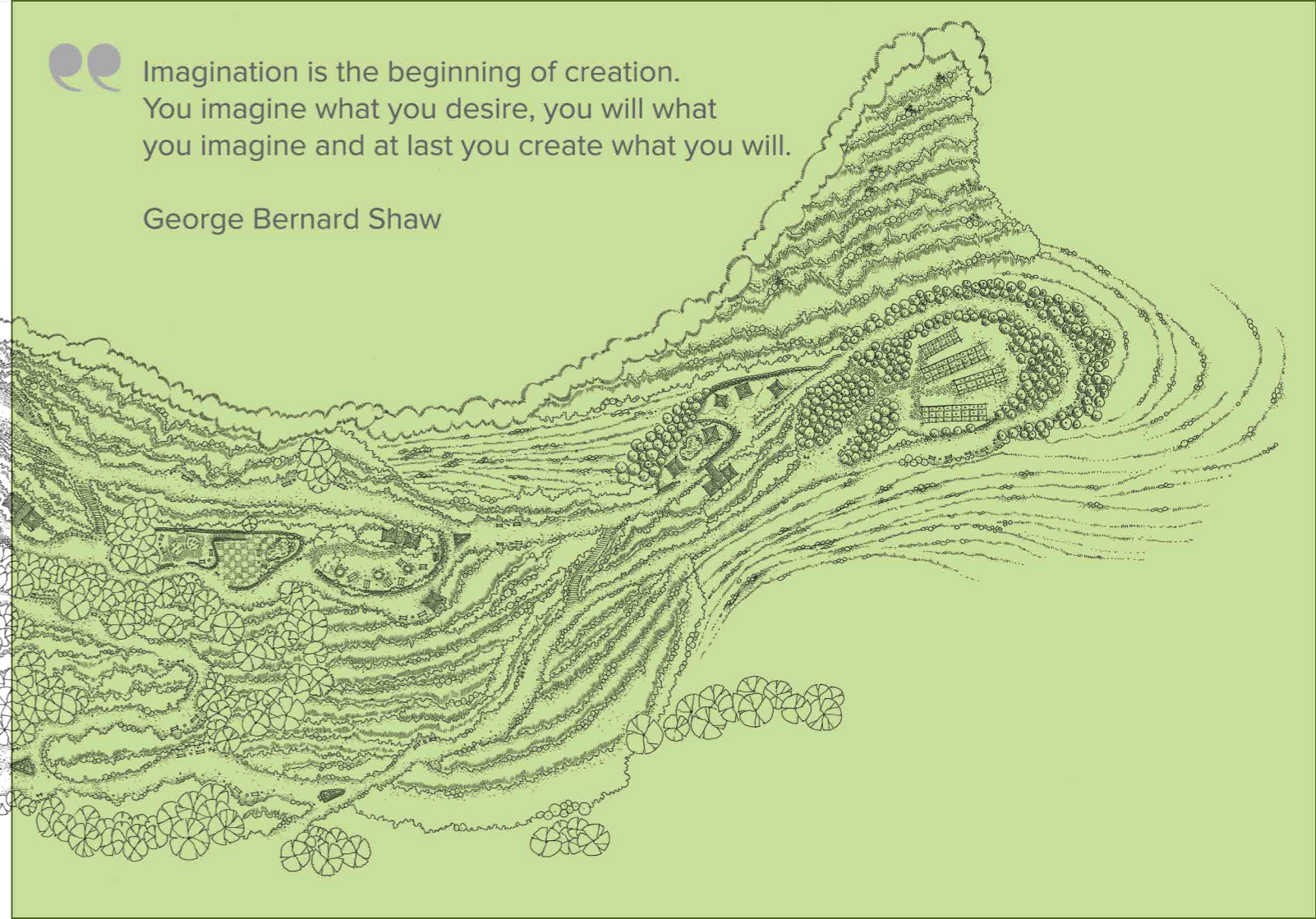


**scapeworks**  
landscape & urban design



Imagination is the beginning of creation.  
You imagine what you desire, you will what  
you imagine and at last you create what you will.

George Bernard Shaw





## Introducing **scapeworks**: A **fresh** take on outdoor design



## Thinking and designing **ecological** **and functional** outdoor living spaces

Scapeworks is a Landscape Architecture and Urban Design firm based in Beirut, Lebanon. Since 2012, our team has been serving clients in Lebanon and the Gulf region on both public and private developments. As a team, our primary principle is involving the client throughout the entire design, planning and construction processes. We find it essential to manage our projects through all their phases to insure our vision is achieved and sustained in the final product. We are always on the lookout for innovative design solutions and celebrate the expertise our team consistently brings to the table. The team is continuously brainstorming which enables us to readily meet the challenges we are presented with in our projects. One of our priorities is to maintain a keen sensitivity to the environmental considerations of the dynamic socio-economic contexts that we work in.

**Our philosophy** from day one has been, “To always design and build aesthetic, ecologically sensitive and functional outdoor living spaces.” We believe that the relationship between people and the environment should be simple and obvious. It is our goal to facilitate a unified and balanced relationship between the people and their landscape, while achieving the needs of both.

**Our team** prides itself in being a leading provider of quality landscape development. To us, delivering an exceptional service means selecting appropriate materials, focusing on details and respecting the agreed timetables and project schedule. We offer a performance-driven approach, and are constantly exceeding our own expectations through the innovative landscape solutions we deliver.

We have also had the privilege of working with top regional consultants on city-scale projects. Our repertoire of collaborative work is helping redefine the potential that sustainable landmark projects hold in the Gulf region. An example of this has been our work on many governmental housing projects in Qatar and the Kingdom of Saudi Arabia as part of the countries’ national development strategies.



Taking you on a journey  
of senses in an **outdoor setting**

# SERVICES



## LANDSCAPE PLANNING

We are concerned with reconciling competing land uses while protecting natural processes and significant cultural and natural resources. When working on large projects, our main target starts from the geomorphology to the different land uses and clients, keeping in mind the sustainability over a period of time.



## CONCEPTUAL & PRELIMINARY DESIGN

In this phase, we produce ideas and take into account the pros and cons of their implementation. After the concept is formed, the preliminary design defines the overall design scheme, where schematics, diagrams, and layouts of the project are done to provide early project outline.



## DETAIL DRAWING

Successful design implementation comes from attention to details and their proper transmittal to contractors. We produce detail drawings that give all the dimensions, fabrication methods and types of materials required to shape our designs.



## LANDSCAPE DOCUMENTATION

We prepare all the relevant documents to envision the site we work on. This is in addition to preparing selection of materials, standard construction specifications, detailing and sustainable design practices.



## MASTER PLAN REPORTS

We prepare reports that aid in understanding urban design projects. Starting with an introduction to the site, the reports include site context and analysis which lead to formulating a specific vision. The report later explores the proposed master plan design, and investigates the project's delivery, phasing and implementation.



## GIS ANALYSIS

For large scale projects, we rely on geographic information system (GIS) analysis, as a major tool that lets us visualize, question, analyze, and interpret data to understand relationships, patterns, and trends that are happening on the site.



## URBAN DEVELOPMENT SCHEMES & DESIGN

We set out an integrated design vision for the desired future development of urban settings. We translate the broad planning aims and visions to practical urban design action at the local level.



## SUSTAINABLE PLANT SELECTION

A sustainable landscape is more than visual aesthetics; it needs to resist in context over time and preferably benefit its context. Thus, we provide sustainable softscape selections so that the landscape is both aesthetically pleasing and environmentally sound.



## DESIGN VISUALIZATION & 3D MODELING

We offer quality 3D architectural modeling and rendering to help illustrate design concepts, visualize spaces and eventually bring projects to life.



## Mastering the artful integration of humans in the **environment**



Our modus operandi is simple, efficient, and reliable.



### WE LISTEN

Listening is an art which we consider as an essential tool to our design process. It is about absorbing contextual information from different sources, by considering the client's voiced requirements but also by assessing each project's surroundings and natural characteristics. As such, we believe listening to existing landscapes as well as their human counterpart is key to a project's success.

### WE CREATE

Creativity is a highly valued design skill that we have learned to spark by constantly questioning and triggering mental incubation. We follow our spatial imagination by relying on experiments rather than process, which allows us to constantly reinvent our design approach, hence keeping up with trends and offering innovative solutions.

### WE TRACK

Our credibility over the years was built on good communication and follow-up, which constitute the essence of our design process. With us on board, it does not just end at design because we always make sure to supervise every step of implementation, tracking progress until handover. On the long run, we make sure to remain available for any questions and inquiries our clients may have.

# OUR PROCESS



# CONTENTS



12

URBAN



38

RESIDENTIAL



66

CAMPUS



76

DEVELOPMENTS



96

RURAL

# URBAN

YEREVAN'S GREEN MASTER PLAN  
YEREVAN, ARMENIA

14

METRO AL-MADINA  
KINGDOM OF SAUDI ARABIA

16

LEIGHWAIRIYA STREETScape DEVELOPMENT  
QATAR

18

MUHAYIL AL-KHAWAREM  
KINGDOM OF SAUDI ARABIA

20

KHAMIS MUSHAYT  
KINGDOM OF SAUDI ARABIA

22

DHAHRAN AL-JANOUB  
KINGDOM OF SAUDI ARABIA

24

BEL QARN  
KINGDOM OF SAUDI ARABIA

26

AL-FAYHAA - THE PILGRIM'S GREEN TRAIL  
KINGDOM OF SAUDI ARABIA

28

TREMBLAY'S URBAN PLAZA  
TREMBLAY, FRANCE

30

REVISITING DALIEH  
BEIRUT, LEBANON

32

TABARKA: PORT CITY  
TABARKA, TUNISIA

36



## Yerevan's Green Master Plan

Yerevan, Armenia

Year: 2016

Type: Urban

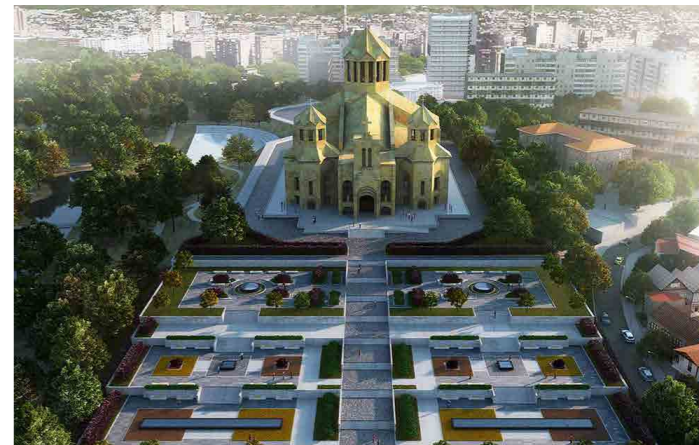
Role: Concept Design

Area: 227 km<sup>2</sup>

This city scale project covering the 227 km<sup>2</sup> of Yerevan revises the streetscape strategy of the capital, in an attempt to review its current urban green resources and to increase green spaces per capita. This was done through expanding green corridors and developing the public parks network. In this framework, six pilot designs with different characters and typologies were proposed. Sustainability of the designs was considered



for best practices in terms of ease of maintenance. Throughout the master plan development, we tried be consistent with the initial vision of Alexander Tamanyan who established the first master plan for Yerevan in 1924 and which adopted the concept of the Garden City to create a decentralized, but closely interrelated network of green urban areas.



## Metro Al Madina

Al Madina Al Munawwara, Kingdom of Saudi Arabia

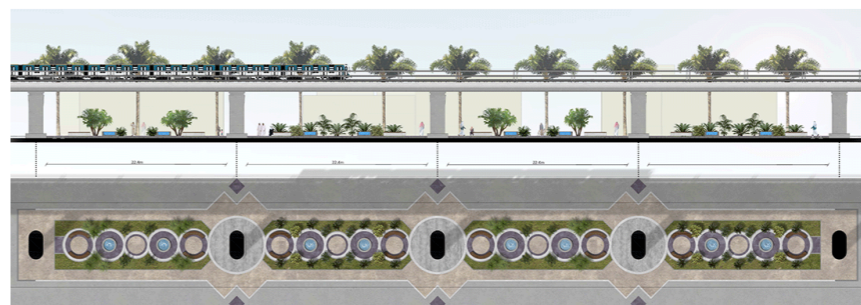
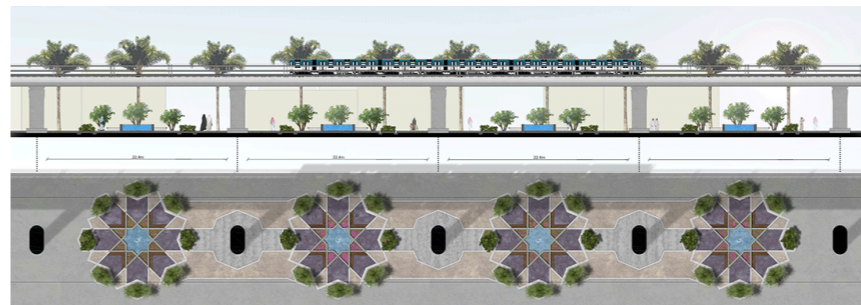
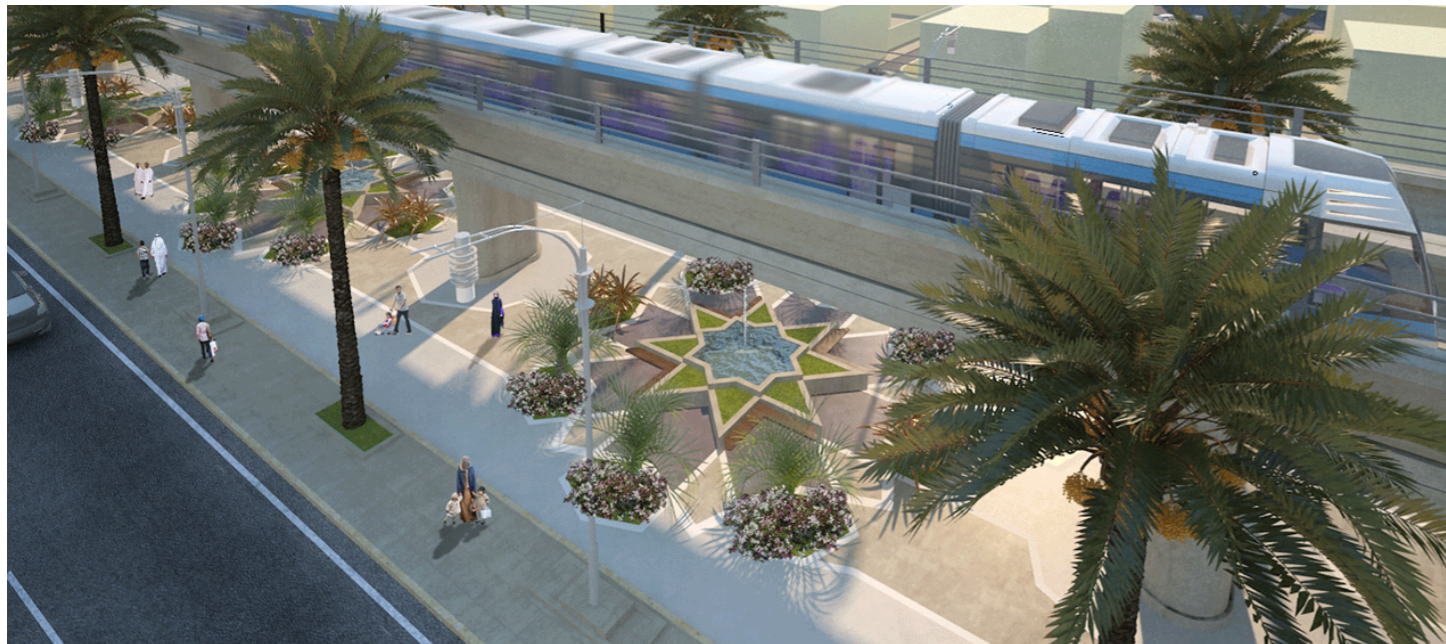
For Khatib & Alami

Year: 2014

Type: Urban

Role: Concept Design

Distance: 33,300 m



Located on the western side of the Kingdom of Saudi Arabia, the Madina region is the third largest by land mass and fifth largest by population in the country. Being a holy city, it has come to host millions of pilgrims, creating the need for a metro system has been designed to assimilate the high traffic. We were commissioned to complement the Metro-Al Madina with a set of linear parks inspired by the different neighborhoods along the city-long transport route. Designed within the existing infrastructural framework these spaces prove how viable urban parks can coexist and thrive in conjunction with public transport systems while also challenging the monotony of repetition that plagues such developments. The result is a green-link that connects both ends of the city and its distinct characters together.



## Leighwairiya Streetscape Development

Leighwairiya, Qatar

For Khatib & Alami

Year: 2012

Type: Urban

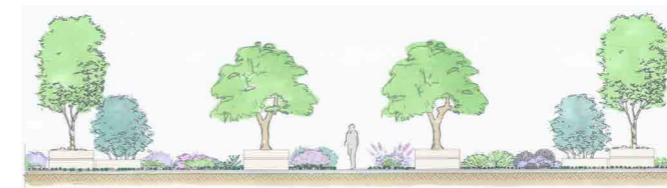
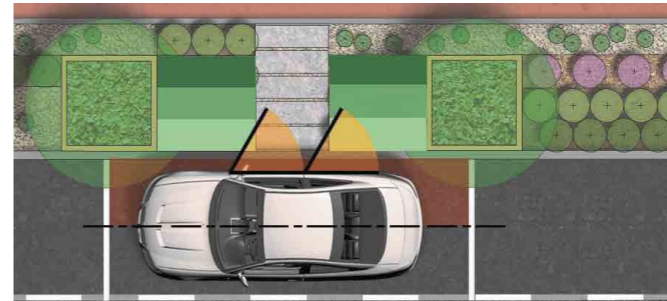
Role: Full Design

Area: 3,000,000 m<sup>2</sup>



Our focus for this project was to address the visual, perceptual and socio-cultural dimensions of the streetscape throughout the village of Leighwairiya, in Qatar. Through our analysis we came to recognize the distinctiveness of Leighwairiya's rural desert landscape which helped inspire our vision and objectives. Understanding this uniqueness

became the foundation for planning a culturally and environmentally sustainable town. We proposed to establish a new landscape character by integrating the existing natural and man-made site conditions with the project's main aims; which were, namely, to beautify the city and to make available to the inhabitants a set of high quality amenity services.



## Muhayil Al-Khawarem

Kingdom of Saudi Arabia

For Khatib & Alami

Year: 2014

Type: Urban

Role: Full Design

Area: 1,723,951 m<sup>2</sup>



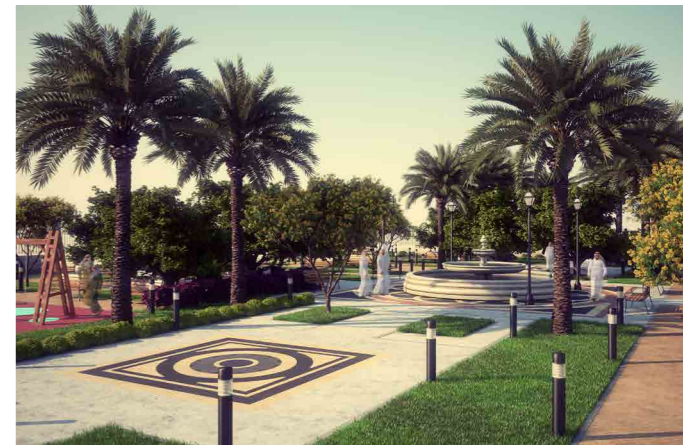
The city of Muhayil Al Khawarem is located 11 km south of Muhayil city and 49 km north-west of Abha in the Kingdom of Saudi Arabia. Under the larger developments by the Ministry of Housing to provide additional housing units, it is currently undergoing an expansion to become a residential city. Our objectives for the project include providing the inhabitants with diverse open spaces amidst the projected urban setting. Within the proposal, we recognized the city's distinct contextual landscape as an inspiration to formulate our project vision and objectives around its ecological and cultural significance.

Khamis Mushayt  
Kingdom of Saudi Arabia  
For Khatib & Alami  
Year: 2014  
Type: Urban  
Role: Full Design  
Area: 878,000 m<sup>2</sup>

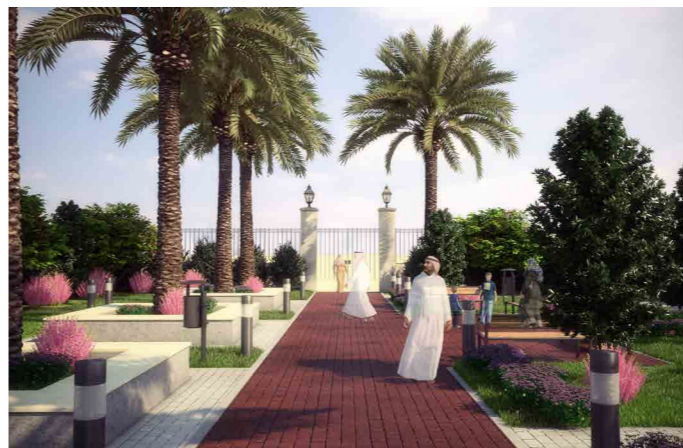


The city of Khamis Mushayt is located to the east of Abha, the south-western capital of the Asir province in the Kingdom of Saudi Arabia. As part of a city-wide project to beautify the area and provide quality amenities for the future inhabitants, our objectives were to create a network of urban parks for the different neighborhoods. Knowing that we will need to achieve visual harmony with the rest of the parks' context, we strived to create a character that seamlessly integrates with the existing natural and man-made conditions. The result is a compositionally coherent web of parks that enlivens the city by catering for the social needs of its users and by positively impacting the environment.

**Dahran Al-Janoub**  
Kingdom of Saudi Arabia  
For Khatib & Alami  
Year: 2014  
Type: Urban  
Role: Full Design  
Area: 766,403 m<sup>2</sup>



The city of Dahran Al Janoub is located to the south of the Kingdom of Saudi Arabia, in close proximity to Yemen. Our initial analysis revolved around identifying different characteristic associations on site. These included the indigenous desert habitat, the agro-pastoral farming routines and the well projected urban amenities. Through the preliminary contextual readings of the city, we formed the building blocks for our concept and master plan. The strategy we proposed was based on combining these distinctive morphological, ecological and visual attributes into one holistic and dynamic landscape framework.



## Bel Qarn

Kingdom of Saudi Arabia

For Khatib & Alami

Year: 2014

Type: Urban

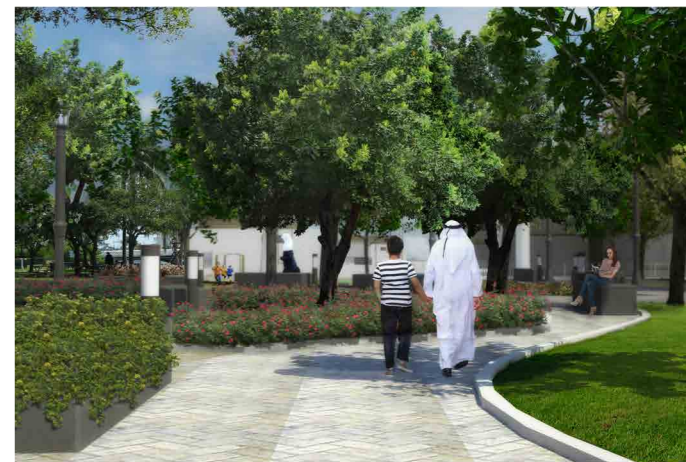
Role: Full Design

Area: 591,473 m<sup>2</sup>



The city of Bel Qarn, located to the south of the Kingdom of Saudi Arabia, falls under the administrative region of Assir. The project aims at expanding the city's residential features as the Ministry of Housing continues its developments across the district. More specifically, the site is located within a relatively rural area and is surrounded by farming communities.

The objective was to design a readily accessible green network for the community's benefit and use. The green spaces followed a terrace-theme, an effective solution to treat mountainous terrain. As such, the proposed morphology follows the site's natural topography and harmonizes with the site's context.



## Al Fayhaa - The Pilgrim's Green trail

Makkah, Kingdom of Saudi Arabia

For Khatib & Alami

Year: 2013

Type: Urban Planning

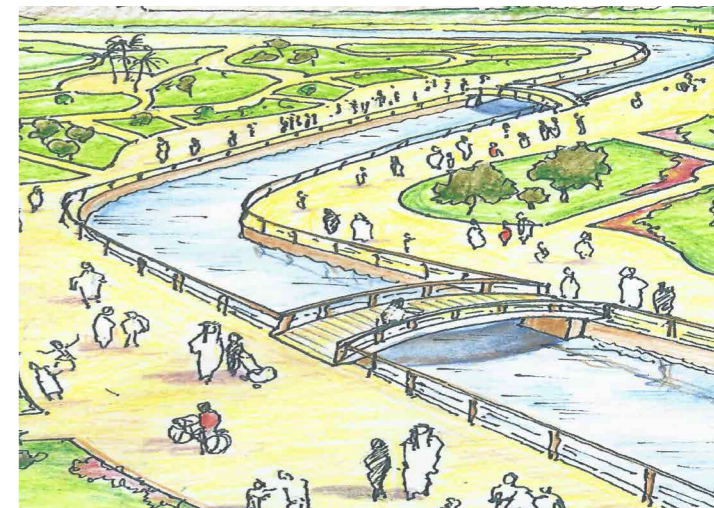
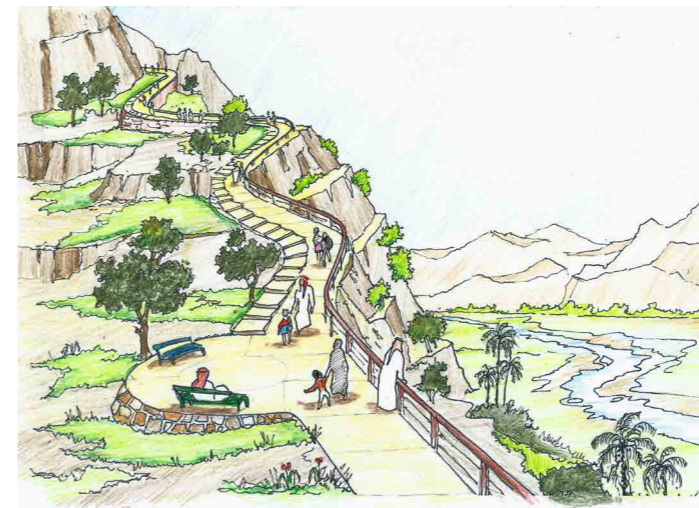
Role: Concept Design

Area: 100,000,000 m<sup>2</sup>



The macro-site here is located on the edge between the holy perimeter of Makkah of the Kingdom of Saudi Arabia and its outskirt districts. The concept for this project was to maximize the site's connectivity through a pilgrim's promenade. We proposed an effective set of links to amend the circulation network and to connect the urban fabric with the natural landscape. Being a highly valuable and culturally delicate land, the challenge was to produce

a design that both respected and promoted its importance. Our proposal called for a diverse set of parks to be installed. Linear parks were laid out along roads to efficiently connect the scattered series of pocket parks throughout the area and to aid in reducing traffic nuisances and overall pollution. Additionally, we proposed a riparian promenade and natural reserves to both preserve and enrich the cultural landscape of Fayhaa.



## Tremblay's Urban Plaza

Tremblay, France

Year: 2012

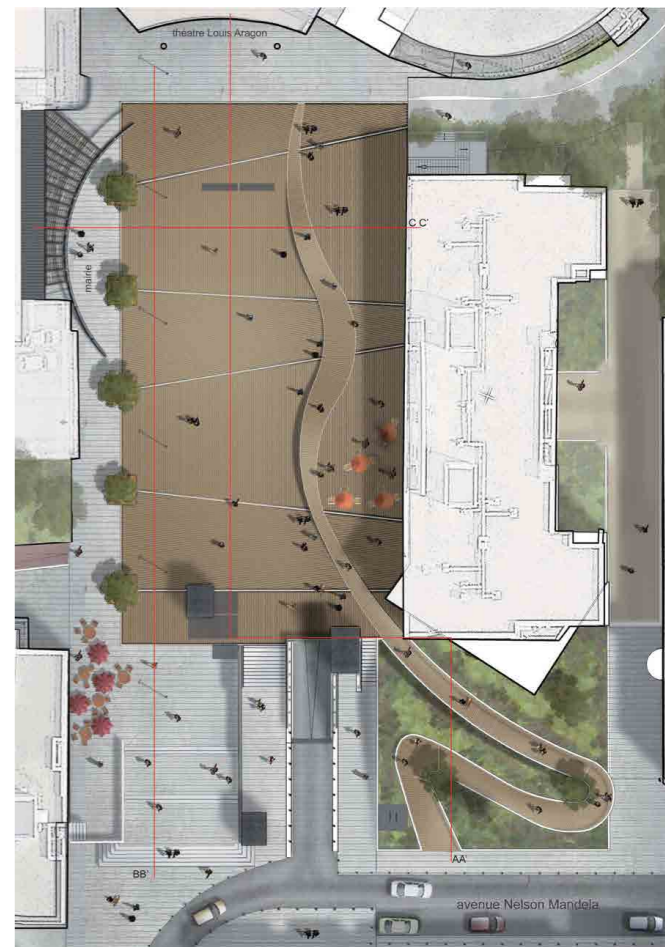
Type: Urban

Role: Competition Entry

Area: 10,500 m<sup>2</sup>



This urban plaza proposal is located at the heart of Tremblay, one of the last French cities on slab. The city's center is dense with little vegetation and is fully pedestrian, which consigns car parking to underground areas. Unlike other French cities, Tremblay did not experience the expansion of slab urbanism and it was only limited to the narrow limits of its central core. Following this ephemeral movement, the city quickly resumed with its development on natural soil and today, thirty years later, its central areas on slab are in desperate need of regeneration. As such, a new cycle of life of their public spaces is rising, especially as the zone now acquired a historical dimension. Our proposal is both simple and user-friendly, catering for a warm atmosphere thanks to the space's geometry as well as the use of wood decking. Far from being taken as a constraint, the issue of pedestrian accessibility between the plaza and the adjacent street is solved with a ramp truly acting as an urban piece which elegantly unfolds on the plaza itself. The softscape component expresses the place's specificity, with a play of full soil depth gardens around the access ramp and a series of elevated planters on the plaza itself. The facades of the adjacent city hall and theater offer colors and visibility to these two institutions, in close correlation to the neighboring public space.



## Revisiting Dalieh

Ras Beirut, Lebanon

In Collaboration with Fadi Mansour, Candice Naim,  
Roula El-Khoury, Ali As'ad, and Lea Helou

Year: 2015

Type: Urban - Award Winning Project

Role: Competition Entry

Area: 110,000 m<sup>2</sup>

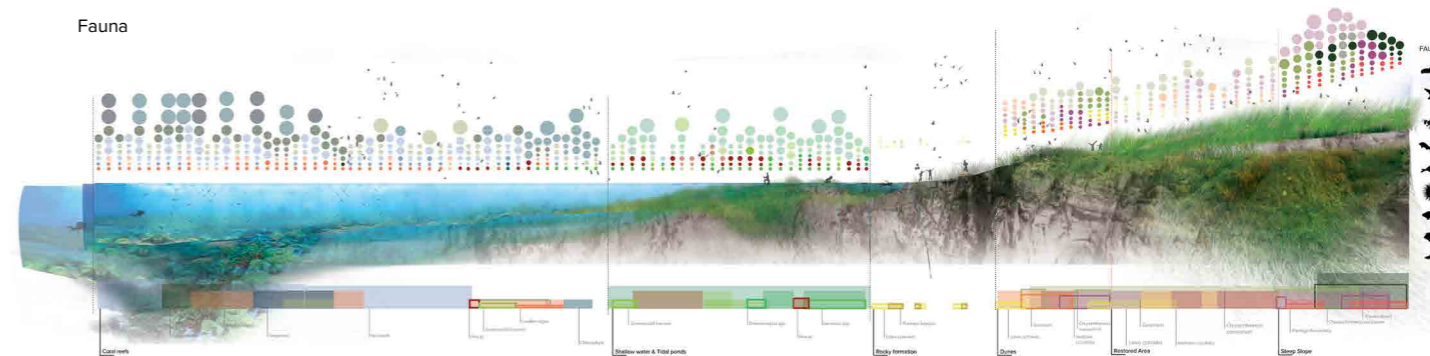
This award winning project was submitted in the frame of a competition commissioned by the civil society to protect Dalieh, a natural site threatened by a big scale water front resort impeding its public use. Our concept was based on a line of thought which recognizes that the Dalieh geological formation is concomitant to the offshore rock formations of the Raouche, and that they should be dually designated as a single environmentally protected terrain.

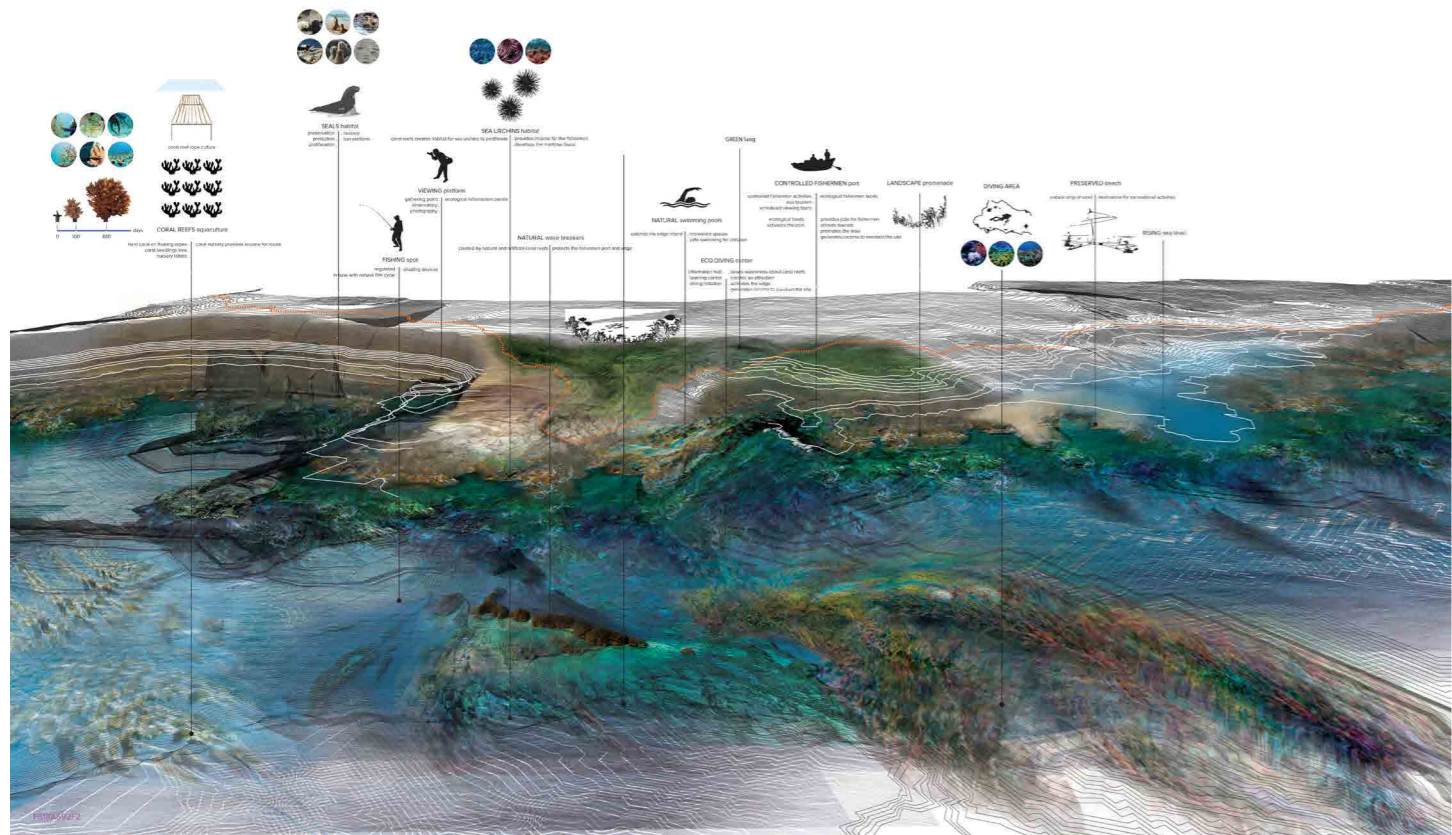
Our intervention engages with the transience of the coastal frontier and its fragility by addressing three interdependent temporal systems (the aquatic, the coastal and urban) contextualized through the inception of a new governing coastal agency conceived as a joint public-private venture. It is an institutional strategy that feeds into exiting ministerial and municipal

structures and which attempts to facilitate the management of what exists as an undeniable common shared space for the city of Beirut. The materiality of urban 'process' usually dictates that process must end in product. The only escape is if the state declares otherwise, and expropriates the Dalieh and allows process to survive in such spaces devoted to closing the loop of cycles and functions at the scale of the city... We choose to interpret the Dalieh as a temporal medium, choose to privilege its process over product, and propose incompleteness as a given in our 'finished' proposal. This landscape is as much, if not more, about the grown as the inert, and is constituted of living, shifting, materials forces and practices to such a great extent, that it cannot help but change over time. This change must be sustained, and allowance in that space must be made for it.

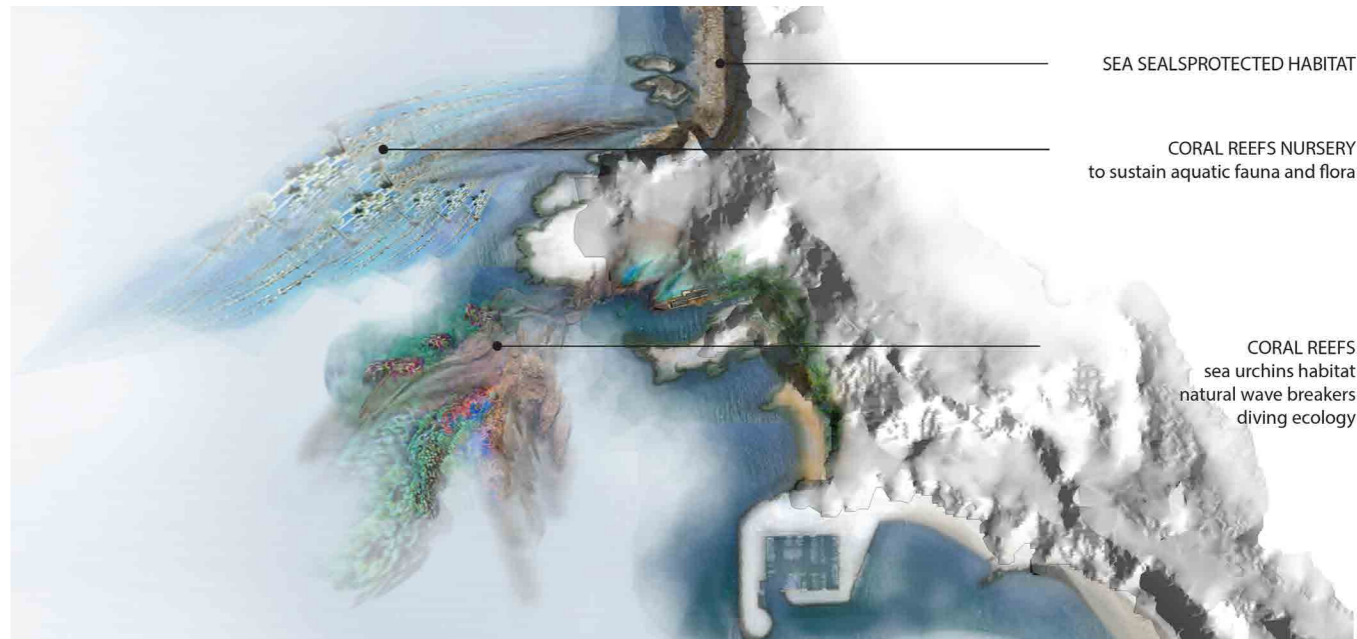
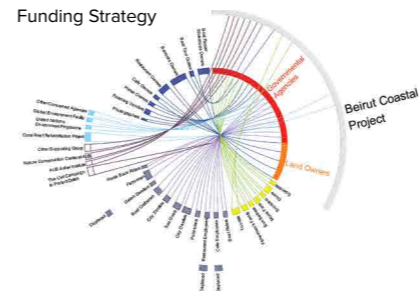


Fauna





Funding Strategy



SEA SEALS PROTECTED HABITAT

CORAL REEFS NURSERY  
to sustain aquatic fauna and flora

CORAL REEFS  
sea urchins habitat  
natural wave breakers  
diving ecology

## Tabarqa: Port City

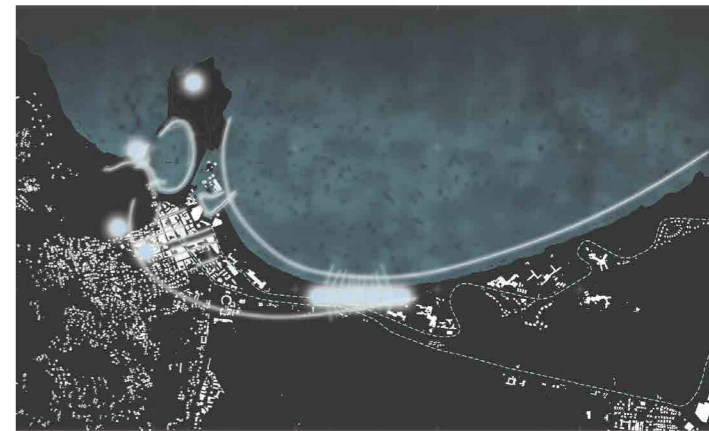
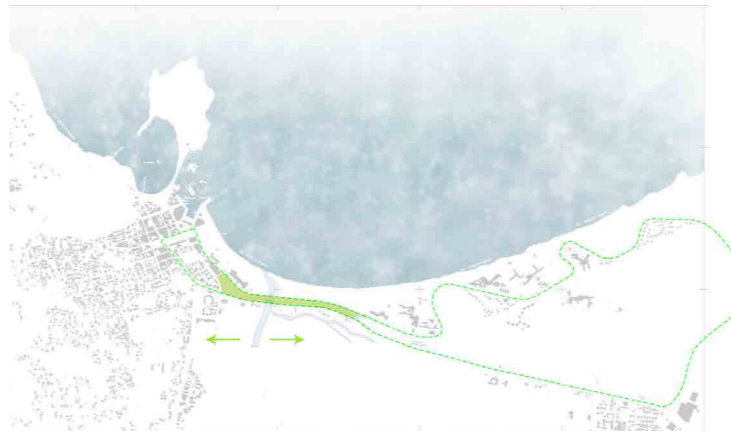
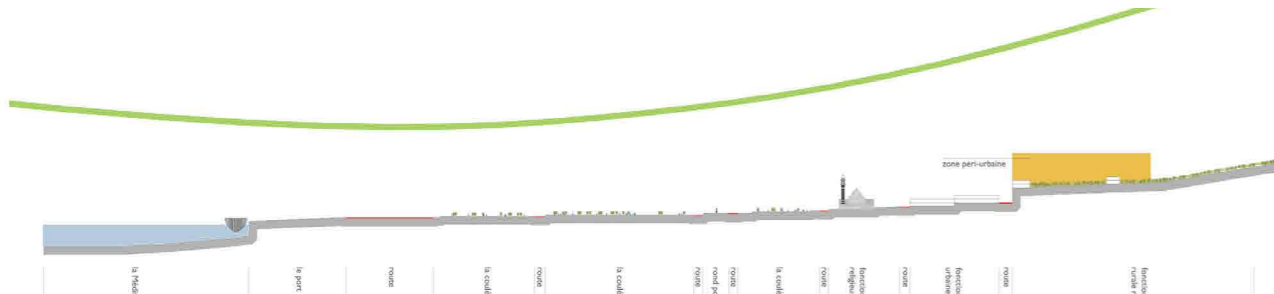
Tabarqa, Tunisia

Year: 2010

Type: Urban - Award Winning Project

Role: Competition Entry

Area: 28,000 m<sup>2</sup>



This winning entry was submitted in a competition articulated around the challenge of the revitalization of Tabarka, an old Tunisian port town. The frame of intervention spreads on the urban fabric of the old city and is defined on its southern border by the naturally ascending terrain. Enriched by a series of cultural landmarks, the city in need of revival is strategically stitched

back together through the setting up of a circuit starting from a neighboring abandoned railway and ending at its characteristic heart, the port. Focalized on four major axes, the proposed vertebration strategy inscribes itself in the reaffirmation of the city's identity by shedding light on all its forgotten heritage areas.

# RESIDENTIAL

KFAR HADA RESIDENCE IS	40
MTAYLEB RESIDENCE NK	42
LAQLOUQ RESIDENCE WY	46
JBEIL RESIDENCE CY	48
HORSH TABET RESIDENCE MH	50
FAQRA RESIDENCE AZ	52
MONTE VERDE RESIDENCE PH	54
HAZMIEH RESIDENCE AK	56
KFAR KATRA RESIDENCE CM	58
SEHEILE RESIDENCE CH	60
HAZMIEH ROOFTOP HK	62
YARZÉ RESIDENCE GG	64



# RESIDENTIAL

## Kfar Hada Residence IS

Kfarhata, Lebanon

Year: 2016

Type: Residential

Role: Full Design

Area: 3,550 m<sup>2</sup>



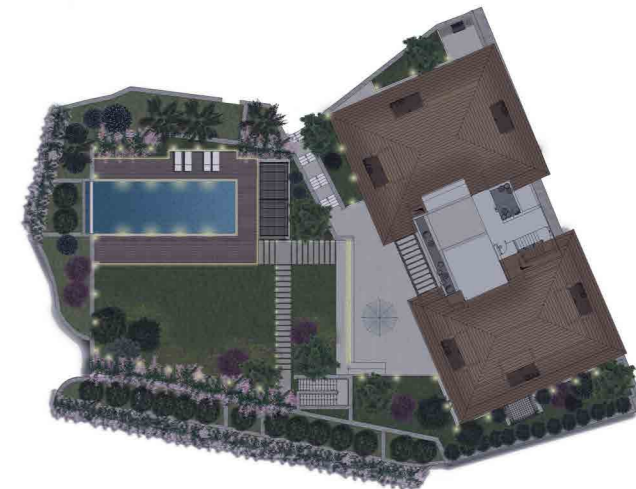
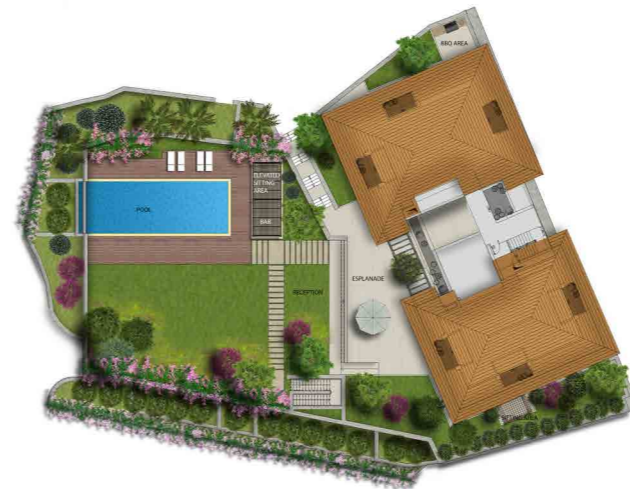
Located in the village of Kfar Hada, in the Koura district of North Lebanon, this large outdoor garden accompanies a residential villa and its annexed penthouse. At the edge of a mountainous profile, it overhangs the region's famous olive groves and citrus orchards. The garden holds several moods that aim to amplify the serene character of the natural landscape by integrating a series of outdoor components. Acting as an extension to the penthouse, a wooden deck striped with embedded lighting fixtures leads to a large water mirror. Around the villa, the atmosphere is actively inviting by offering numerous possibilities of outdoor fun among the smell of blossoming flowers and



# RESIDENTIAL

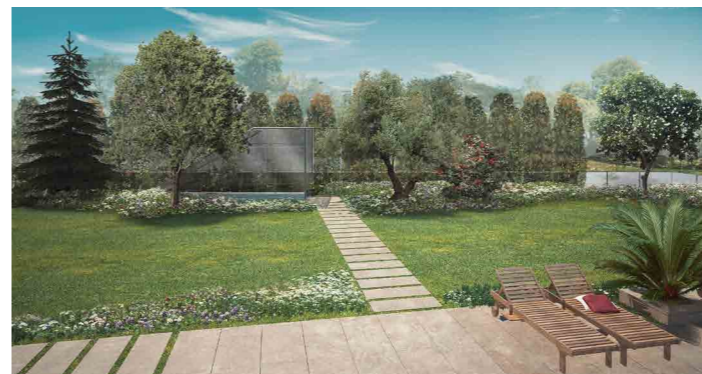
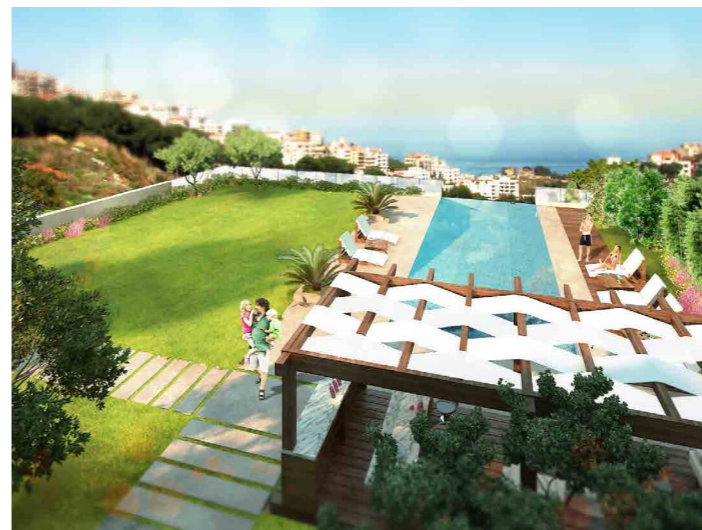
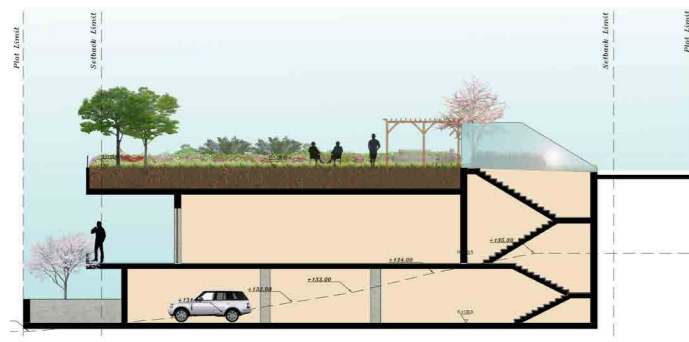
Mtayleb Residence NK  
Mtayleb, Lebanon

Year: 2014  
Type: Residential  
Role: Full Design  
Area: 3,119 m<sup>2</sup>



This private garden was designed to function as an extension to a newly built residential building in Mtayleb, Lebanon. The design challenge was to convey a feeling of continuity despite the building and planned garden-space existing on two separate parcels of land. We decided to maximize the outdoor space adjacent to the building by raising the secondary plot above grade, expanding both the potential horizontal and vertical space. By utilizing the natural change in slope and abiding by the required legal set-backs, we succeeded in raising a garden platform and placing beneath it a state of the art club-house, further expanding the proposed program. The now leveled garden includes a series of shaded seating areas and an infinity pool, making the most out of the breathtaking views towards Beirut.





# RESIDENTIAL

## Laqlouq Residence WY

Laqlouq, Lebanon

Year: 2015

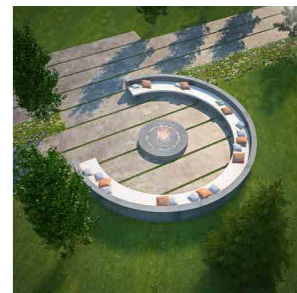
Type: Residential

Role: Full Design

Area: 14,000 m<sup>2</sup>



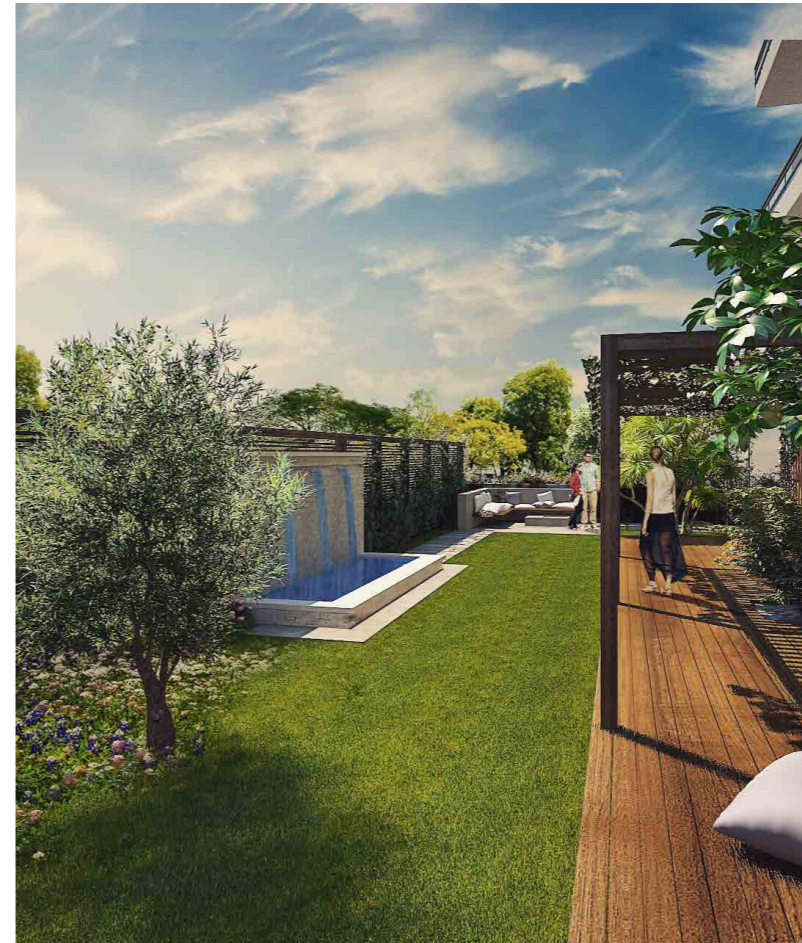
Laqlouq is a small mountainous village in the Jbeil District, known for its high altitude. Inspired by the beauty of their land, and similarly to traditional Lebanese villages, the residents created an architecture from its stones and timbers both simple and refined. The relationship between architecture and nature being the central force of the village's design character, we naturally focused on opening the house to the side of the valley by forming a platform for the enjoyment of the dramatic landscape. The seasonal character of the area placed family at the core of the activity program, and accordingly the landscape was designed to accommodate social gatherings and large family events, with a small pool, an outdoor kitchen, and sitting areas. Moreover, the choice of plants was specially made to suit the snowy nature of the area during wintertime.



# RESIDENTIAL

## Jbeil Residence CY Byblos, Lebanon

Year: 2015  
Type: Residential  
Role: Full Design  
Area: 216 m<sup>2</sup>

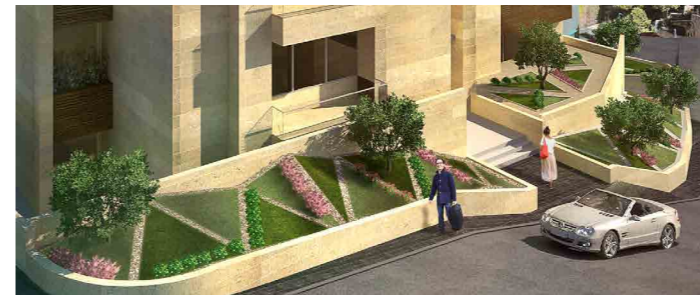


Situated within the historical city of Byblos this residential garden is inspired by the vernacular Lebanese character and lifestyle of the local people. The proposal entails the creation of a minimalist open space that maximizes on function within a small 216 m<sup>2</sup> area. Apart from introducing a central water feature and strategic seating areas, the existing trees were preserved and the botanical composition was completed with ornamental climbers and ground covers. The entrance welcomes users through a trellis covered in lush climbers. In fact, the use of climbers around the entire periphery gives the garden a cooling and comforting sense of privacy while softening the geometric edges of the architecture.

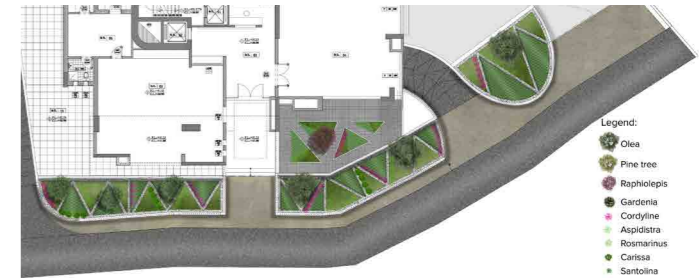
# RESIDENTIAL

## Horsh Tabet Residence MH Sin el Fil, Lebanon

Year: 2015  
Type: Residential  
Role: Full Design  
Area: 141 m<sup>2</sup>



For this project in Sin el Fil, Lebanon, we proposed three alternatives to a building's ground floor design. The landscape components was intended to function as an optimal transition space between the street and the remainder of the building. The designs aim at creating this connection between the ground floor and street levels by minimizing the visual impact such an embankment would have as a physical barrier. By creating a series of gently sloped planes between the existing levels, spaces were formed in accordance with the set geometric guidelines and an added layer of plantings. Various grasses, ground covers and natural pebbles places along the embankment give the space an iconic atmosphere, while the horizontal terrace, planted with green patches and merged into the building, provides a pleasant sight from both inside and the outside.



Legend:  
Olea  
Raphiolepis  
Gardenia  
Chivla  
Agapanthus purple  
Agapanthus white  
Tulbaghia  
Santolina  
Diets  
Bulbine  
Linope

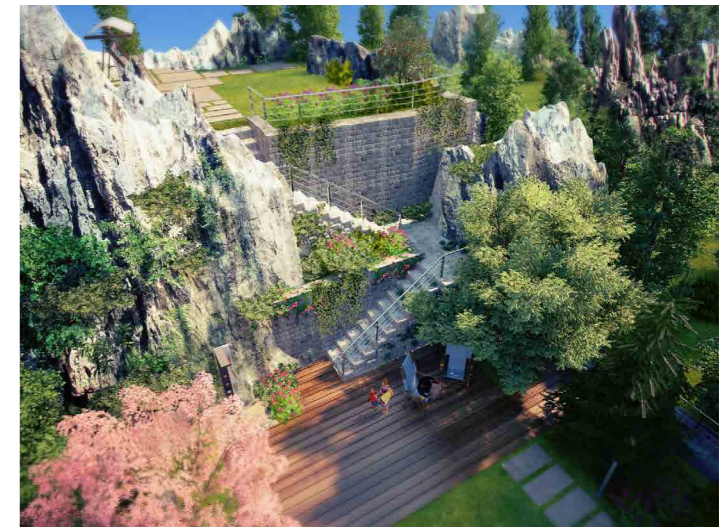
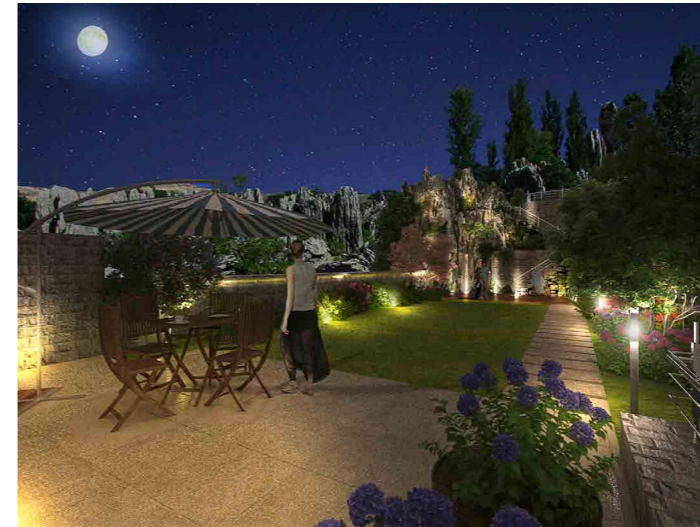
Legend:  
Olea  
Pine tree  
Raphiolepis  
Gardenia  
Cordylone  
Aspidistra  
Rosmarinus  
Carissa  
Santolina

Legend:  
Olea europaea  
Pinus pinea  
Raphiolepis  
Osmanthus  
Gardenia  
Agapanthus Purple  
Pennisetum  
Tulbaghia  
Carissa  
Sedonaphrum (Lawn)  
Wedelia  
White Pebbles

# RESIDENTIAL

## Faqra Residence AZ Faqra, Lebanon

Year: 2013  
Type: Residential  
Role: Full Design  
Area: 200m<sup>2</sup>



This private residential villa is located in the high mountains of Faqra, Lebanon. Revolving around the theme of active recreation, the program was set right from the get-go. Designed to accommodate social gatherings and large family events, the outdoor space does well with visually connecting to the surrounding rocky landscape – effectively expanding the garden. The sharp linear pathway that contrasts with the organic combinations of endemic plants and rhythmic LEDs all work in unison to provoke the user's reflection over and contemplation of the remarkable shears and rock formations that frame the setting. Bordered from the neighbors, the client's privacy is preserved without obstructing the visual continuity of the omnipresent geologic structures that dominate the landscape.



# RESIDENTIAL

## Monteverde Residence PH Monteverde, Lebanon

Year: 2015  
Type: Residential  
Role: Full Design  
Area: 72.5 m<sup>2</sup>

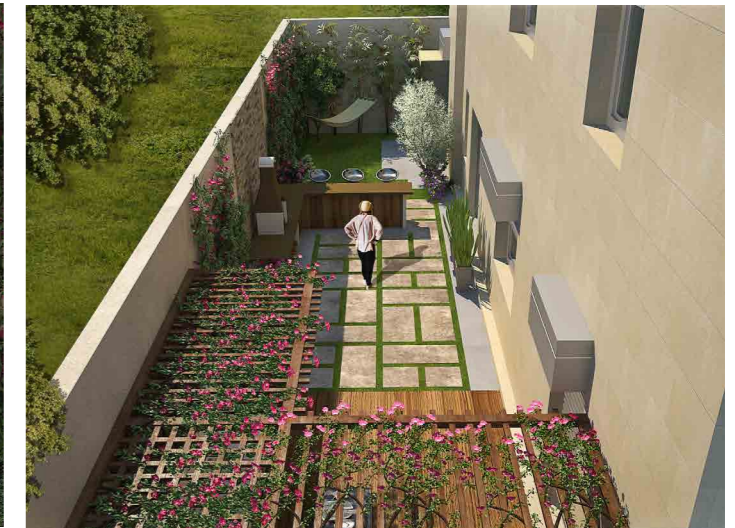


For this residential terrace in Monteverde, Lebanon, we created a getaway for both the mind and soul. Away from all the tussle of daily activities, the space invites the users to retreat for a daytime siesta or a tranquil evening in the outdoors. The tensile-shaded spaces are bordered with a variety of lush vegetation and floral compositions which help cool and invigorate the space. The owners also have access to a dining area and a raised deck for entertaining guests. The design effectively extends the indoor living space to the outdoors as the existing visual and physical accesses are both employed and enhanced.

# RESIDENTIAL

## Hazmieh Residence AK Hazmieh, Lebanon

Year: 2015  
Type: Residential  
Role: Full Design  
Area: 65 m<sup>2</sup>



Located in the area of Hazmieh in Lebanon, this lush ground floor terrace is set on a space that might be small, but lives large with a seating area, a charming barbeque and bar area as well as a multitude of planting arrangements. Considering the residential nature of the terrace, we created a tranquil and inviting space, genuinely harmonious and peaceful to return to at the end of a busy day. The place also accommodates for social gatherings and includes a deck area on one side and a hammock on the other side, thus making it entertaining for guests. The design efficiently links the indoor compartment of the house with its outdoors through space continuity and multi-functionality.



# RESIDENTIAL

## Kfar Katra Residence CM Kfarkatra, Lebanon

Year: 2015  
Type: Residential  
Role: Full Design  
Area: 3,000 m<sup>2</sup>



This private residence is located in the mountainous village of Kfar Katra in the Chouf District. The landscape design was inspired by its lush surrounding greenery, and was considered in a way to link three adjacent yet separate plots. The entrance, surrounded by floral arrangements and green arches, leads us to the main courtyard and parking area. Just next to the villa, the space was sensibly treated to provide optimal outdoor services while sustaining harmony with the surrounding nature, accordingly including a cottage garden, a closed pool house to suit low winter temperatures, a bar, and a main sitting area surrounded by colorful floral combinations.



# RESIDENTIAL

## Seheile Residence CH Seheile, Lebanon

Year: 2016  
Type: Residential  
Role: Full Design  
Area: 145 m<sup>2</sup>



This residence is located in the mountainous village of Seheile in Mount Lebanon. In this lush ground floor terrace, the landscape design entails the creation of a minimalist open space with maximised functions, which include a bar, a BBQ area, a hammock, and seating areas to accommodate for social gatherings. At the same time, the design aims at creating a harmonious and tranquil space within a residential context. The design effectively extends the indoor living space to the outdoors as the existing visual and physical accesses are both employed and enhanced.



# RESIDENTIAL

## Hazmieh Rooftop HK Hazmieh, Lebanon

Year: 2016  
Type: Residential  
Role: Full Design  
Area: 164 m<sup>2</sup>



This charming rooftop is located in the Beirut suburbs, majestically overlooking the entire cityscape. Spread over two independent areas, it allowed for the provision of two different atmospheres. On one side, an eclectic contemporary space was designed, acting as an extension of the indoor glassed seating area and equipped to host terrace parties. On the other side, a more intimate, Mediterranean setting is provided, surrounded by homegrown, fresh herb and vegetable planters. It offers an opportunity for smaller family get-togethers such as sharing breakfast, enjoying of a movie or even gathering around a culinary activity thanks to the availability of a complete cooking station.



# RESIDENTIAL

## Yarzé residence GG

Yarzé, Lebanon

Year: 2016

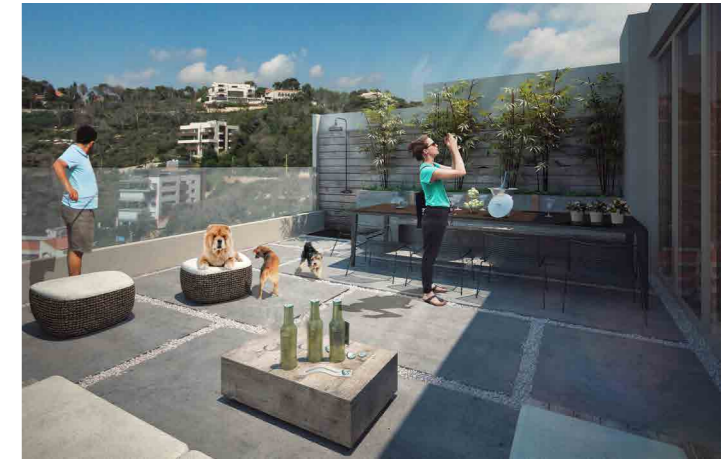
Type: Residential

Role: Design

Area: 45 m<sup>2</sup>



This residential rooftop complements a beautiful loft apartment occupied by a young couple. The end product's feel is fresh, warm and laid back thanks to its intentionally rough industrial look. The polished concrete flooring accompanied by peripheral concrete planters orients the view towards the adjacent forest. Entirely dog friendly, the central space ornamented by black bamboo hosts a seating area, a dining table connected to the indoor kitchenette as well as a tanning platform, a barbecue station and an outdoor shower for those hotter summer days.



# CAMPUS

QATAR UNIVERSITY STUDENT AFFAIRS BUILDING

68

ACS NURSERY PLAYGROUND

72



**Qatar University Student Affairs Building**  
 Qatar  
 For Khatib & Alami  
 Year: 2015  
 Type: University Campus  
 Role: Full Design  
 Area: 68,960 m<sup>2</sup>



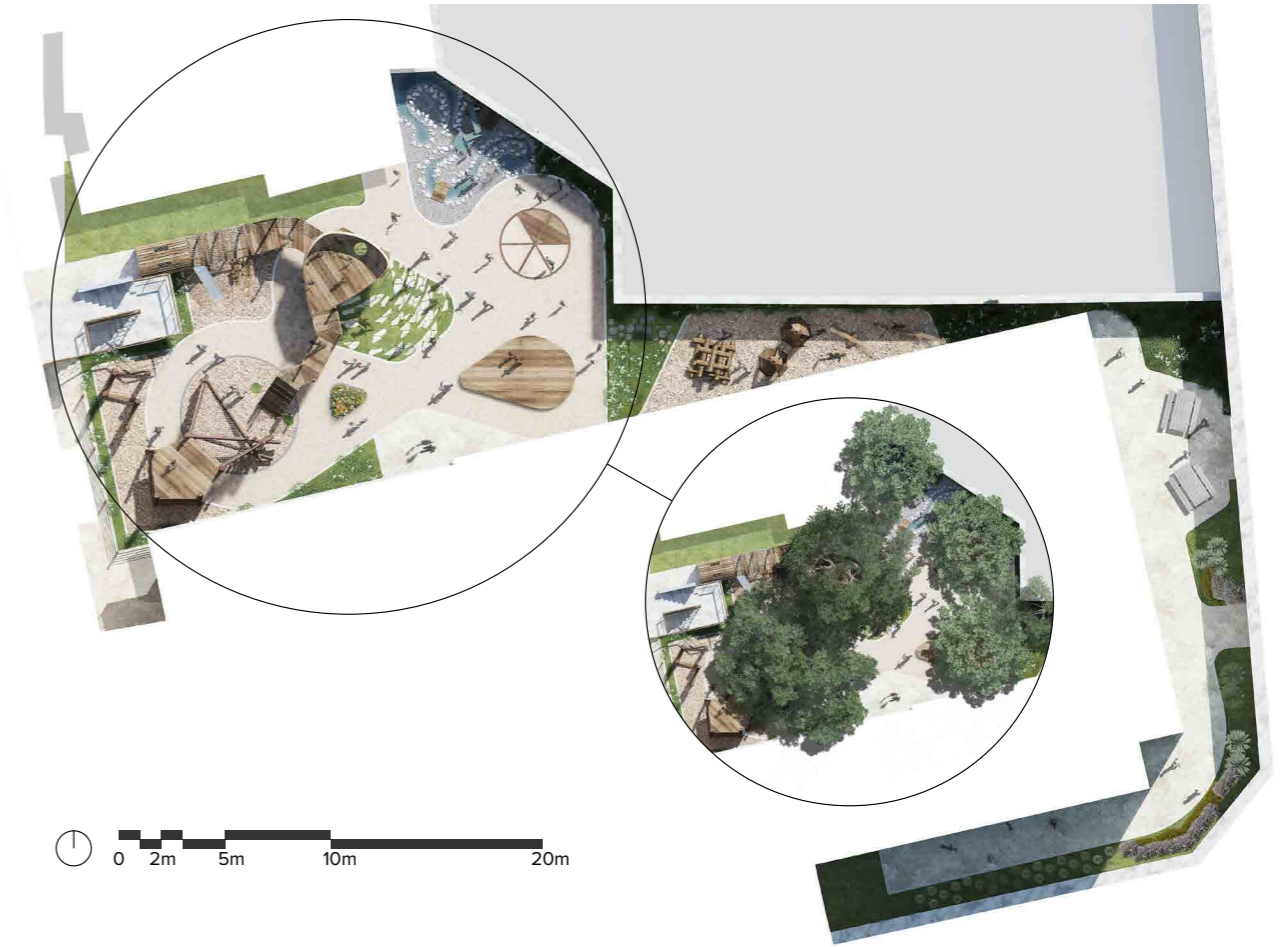
Our design for the Qatar University revolved around the central Student Affairs building and its associated courtyards and green spaces. Being the primary face of the institution, we not only sought to create an academically motivating environment to learn in but also designed the entrance as a stage that reflects the prestigious rank that the university holds. The arabesque-inspired, state of the art fountains, reflection pools and amphitheater punctuate the site, while the serene walkways lead the users into a set of tranquil, natural spaces where they can be soothed and inspired. We also took to the rooftops, as well, and followed the theme of the inner courtyards to blend with the new outdoor setting.





## ACS Nursery Playground Beirut, Lebanon

Year: 2016  
Type: School Campus  
Role: Full Design  
Area: 700 m<sup>2</sup>



0 2m 5m 10m 20m



In recent years, child psychologists have observed increased behavioral problems due to Nature Deficit Disorder, a consequence of children drifting away from the benefits of playing in nature. The American Community School, a leading academic establishment in Beirut, aimed at tackling this issue by providing an outstanding educational outdoor area to its nursery students. As such, the developed playground is one of a kind, completely revolving around the theme of Nature and entirely composed of natural elements. It is articulated around three distinct play habitats (Adventure, Discovery and Creativity) which each cater for different activities and development goals.



# DEVELOPMENTS

CLOVER PARK  
HORSH TABET

78

DBAYYE COASTAL DEVELOPMENT  
DBAYYE

82

KFARAABIDA WEDDING VENUE  
KFARAABIDA

86

AL FANAR DEVELOPMENT  
FANAR

88

TOWER FOURTY FOUR  
SIN EL-FIL

92

DFOUN RESORT  
DFOUN

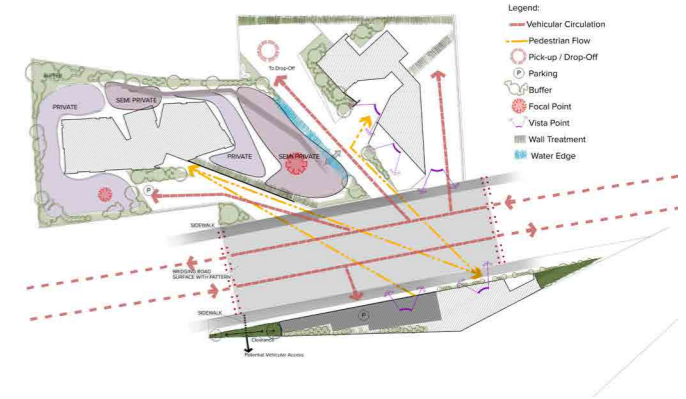
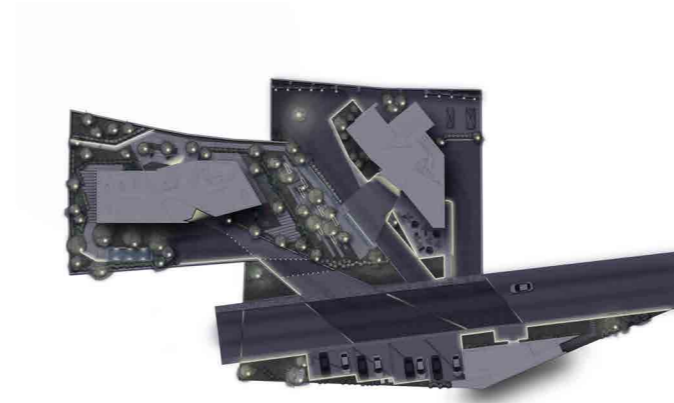
94



# DEVELOPMENTS

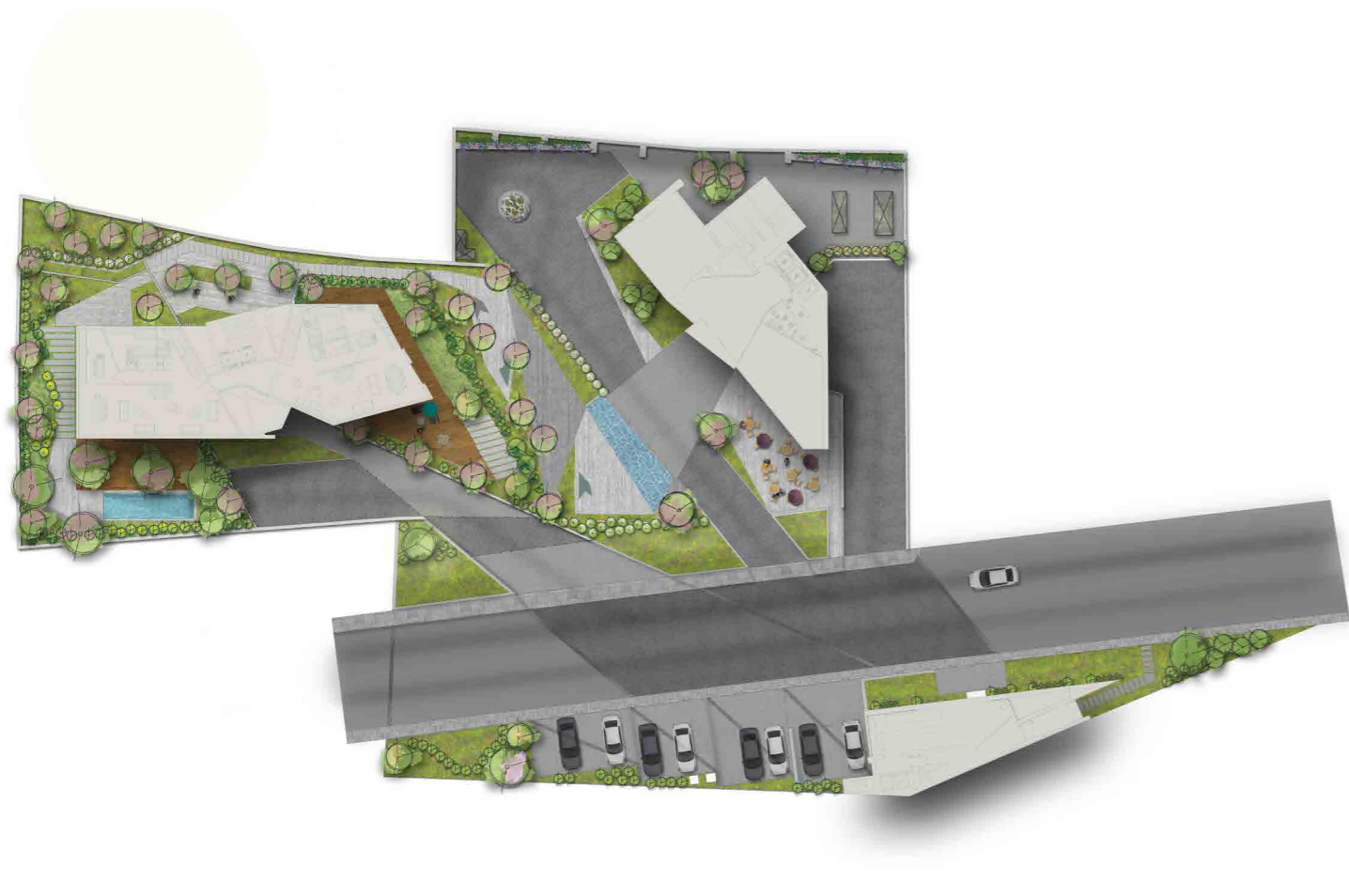
## Clover Park Development Sin El Fil, Lebanon

Year: 2015  
Type: Development  
Role: Full Design  
Area: 890 m<sup>2</sup>



The Clover Park Development in Sin El Fil, Lebanon, consists of three buildings that have different land uses, which means they cater for different user groups and activities. Its presence will redefine the urban character of the street by providing a harmonious complex rooted in its physical connectivity and visual linkages. The suggested outdoor areas are based on the three buildings' orientation and good relationship with respect to each other in order to extend further their symbiotic association at ground level. As such, all users should feel they belong to a larger community which, in turn, implies designing for aesthetics, permeability and ease of circulation.





# DEVELOPMENTS

## Dbayye Coastal Development

Dbayye, Lebanon

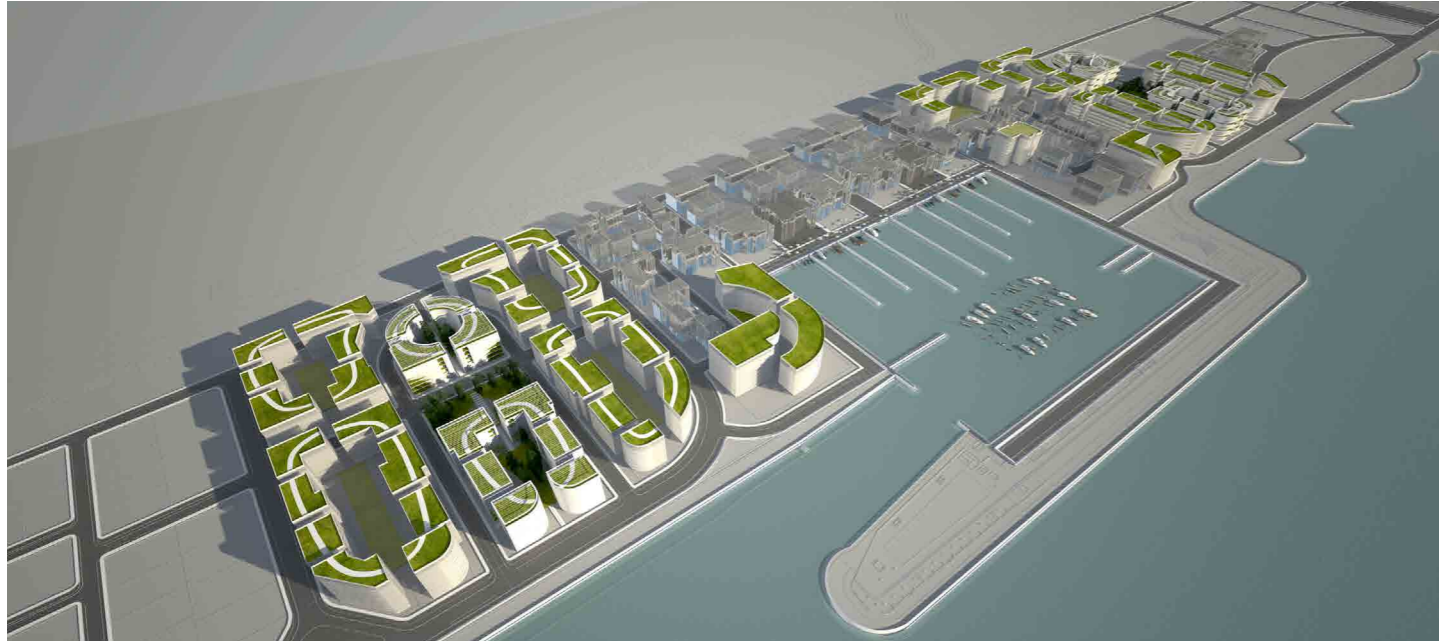
For Khatib & Alami

Year: 2014

Type: Development

Role: Concept Design

Area: 250,000 m<sup>2</sup>



This coastal development project in Dbayyeh, Lebanon aims to become a mixed-use sustainable city that overlooks the Mediterranean Sea. Knowing that it will be divided into three main zones – business, commercial and residential – we sought to enhance the new district's connectivity using a seaward promenade. Providing this amenity meant offering the residents an extension of their inner-city spaces through a diverse set of decorative ornamental designs. We thus proposed various public gardens and courtyards within the urban zones to cater for the users' recreational activities. These were laid out along a framework of lateral and longitudinal axes which aided in preserving the visual corridors towards the sea and ensuring a seamless connection between the various green spaces. The gardens are also strewn atop the roofs of buildings to enhance the owners' experience of this luxury district along the coast.





## 86

Year: 2014  
Type: Development  
Role: Concept Design  
Area: 11,000 m<sup>2</sup>



Overlooking the spectacular sea-front of Northern Lebanon, this project encompasses the creation of an oasis along the coast. The challenge was to make use of the culturally significant yet abandoned salt-pans. We decided to transform these existing platforms into a set of linked spaces, each with a specific function. Reviving the traditional essence of these structures, some were designed for seating, some for pools and others were even stocked with a display of the salt, itself. With sweeping views of the Mediterranean, a capacity of over five-hundred seats, multiple banquet tables and a plethora of ornamental gardens, the magical oasis is the perfect venue for the best of celebrations. Highly ornamental gardens, olive groves, bungalows, terraces and swimming pools imbue the resort with a diverse and abundant set of programs for the enjoyment of its users.



# DEVELOPMENTS

## Al Fanar Development

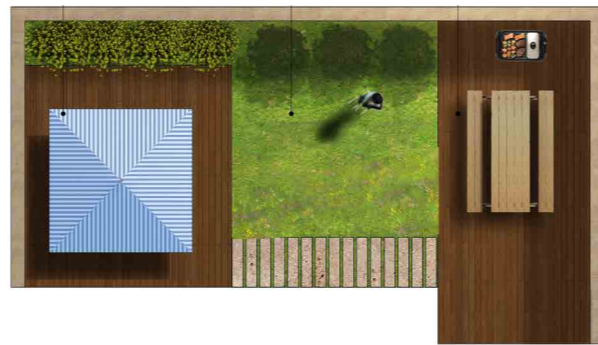
Fanar, Lebanon

Year: 2014

Type: Development

Role: Concept Design

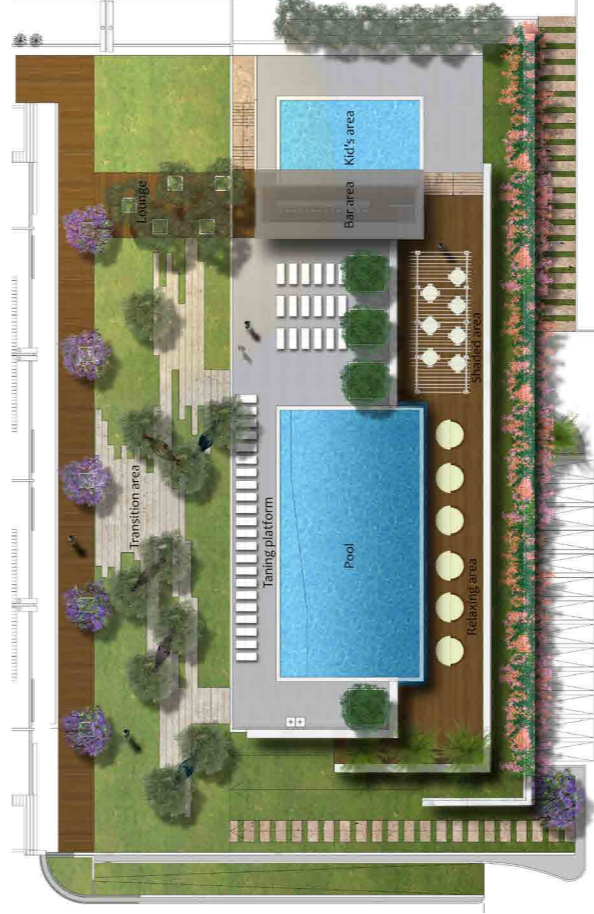
Area: 23,000 m<sup>2</sup>



Located within the booming suburb of Fanar and in close proximity to Beirut, Lebanon, this 23,000 m<sup>2</sup> haven is set along a pleasant hillside as it overlooks the Mediterranean Sea. This secure community includes apartments, duplexes, townhouses and a diverse array of amenities.

The designed landscape plays a major role in giving the site its peaceful and luxurious character. Divided into seven zones, each one serves a specific purpose. These include, private backyards, ground floor gardens, green roofs, playgrounds, a nursery area, a pool area and outdoor sports facilities.





# DEVELOPMENTS

## Tower Fourty Four Sin El Fil, Lebanon

Year: 2016  
Type: Development  
Role: Design  
Area: 5,000 m<sup>2</sup>



Tower FourtyFour is the second largest mixed-use tower project in the larger Beirut area. As it ambitions to become one of the few LEED certified buildings of the Lebanese capital, its outdoor space plays a central role in achieving this objective. Consistently orienting pedestrians towards their destination through a hierarchized circulation network, it provides minimally designed seating areas strategically located amongst planted beds mirroring native Mediterranean landscapes. Along main axes, narrow linear water features slowly over-flow over gravel strips to create serene aquatic acoustics while using as little water as possible. Throughout the entire design, aesthetics are optimized while still allowing for underground water collection and eco-friendly water evaporation rates.



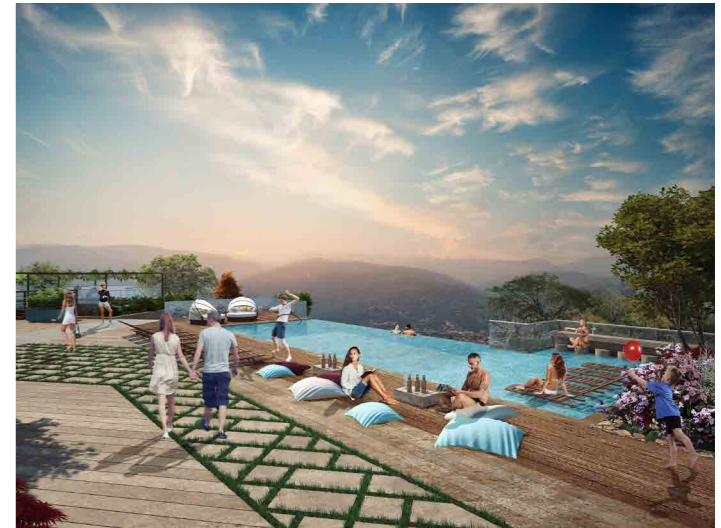
# DEVELOPMENTS

## Dfoun Resort Dfoun, Mount Lebanon

Year: 2016  
Type: Development  
Role: Design  
Area: 1,900 m<sup>2</sup>



Aimed at reflecting the genuine hospitality of people originating from the Lebanese mountains, this small scale Bed & Breakfast venue is located in Dfoun, a small village of the Aley district. Immersed in between infinite olive and fruit orchards, the venue consists of four independent traditional stone guest houses ornamented by their own vernacular roof garden. All four residences are linked to the highlight of the resort, a large swimming pool with a bar overlooking the panorama as well as four outdoor spaces offering different levels of serene atmospheres.



# RURAL

KFARDEBIAN VENUE HP

98

AMMATOUR ECOLOGICAL RETREAT

100

BAABDA FOREST REHABILITATION

102



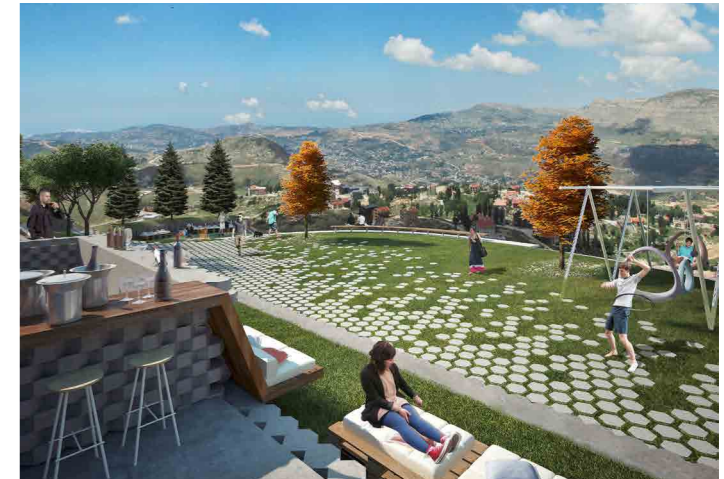
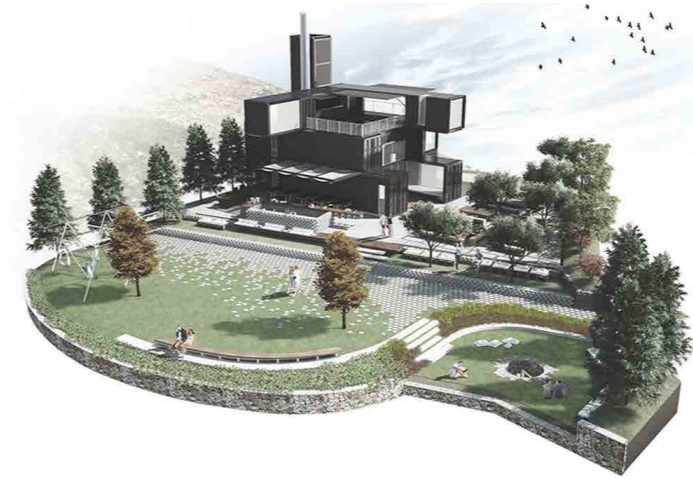
## Kfardebian Venue HP Ammatour, Lebanon

Year: 2016  
Type: Rural  
Role: Full Design  
Area: 1128 m<sup>2</sup>



This ambitious project stems from the vision of an F&B expert and owner of many venues in the Kfardebian region. The site area is relatively flat and presents the characteristic to end abruptly with a steep slope, suddenly unveiling a breathtaking scenery of Mount Lebanon and the Chabrouh dam. Aimed at hosting large events and a yearlong restaurant with an industrial feel, the design creates a series of open spaces that provide a range of

different experiences to its visitors. Visual and physical connections with nature are established gradually while circulating the levels downwards. The lowest platform provides the most intimate setting where guests would feel sheltered while contemplating the immensity of the mountainous Lebanese landscape.



## Ammatour Ecological Retreat Ammatour, Lebanon

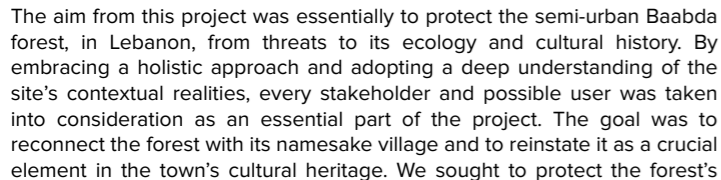
Year: 2013  
Type: Rural  
Role: Full Design  
Area: 33,730 m<sup>2</sup>



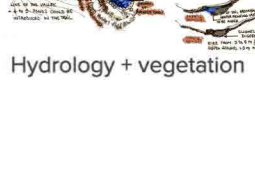
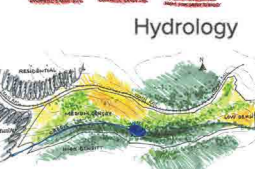
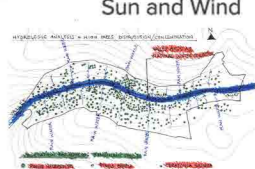
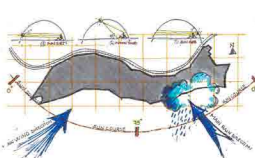
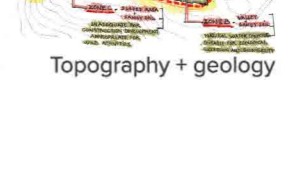
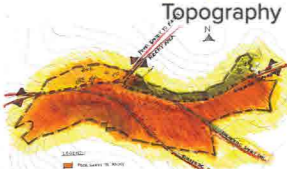
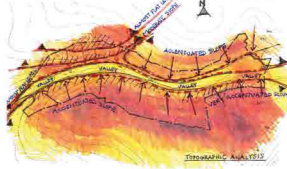
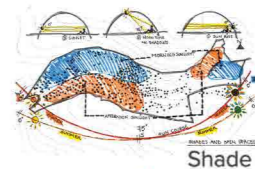
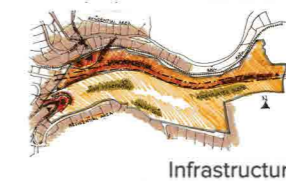
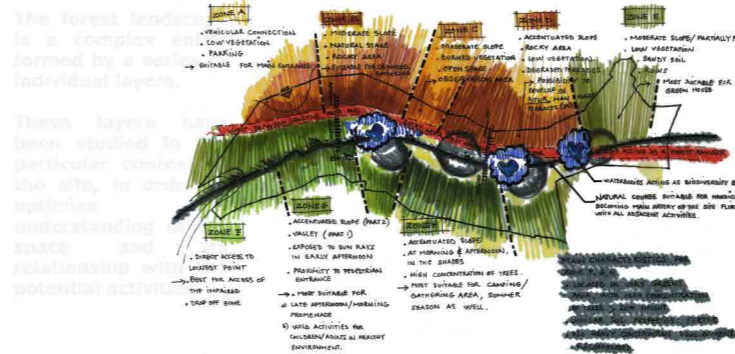
Our design for the Ammatour ecological retreat, in Lebanon, was aimed at optimizing the visitors' multidimensional experience of the exceptional landscape. Born from the visions of a grassroots initiative, the retreat aims at promoting environmental awareness and organic production in a pleasant and welcoming atmosphere. Morphologically, the site encompasses a cliff exposed to prevailing winds and a perennial water course that runs at the bottom of the site. The circuit gradually unfolds along a defined trail, dotted with activities which abide by the existing site's potential. Gathering spaces towards the bottom end of the cliff overlook the surrounding landscape and immerse the users in a sensorial experience as they observe a nearby waterfall. These resting spaces are intended for sharing and discussing the users' experiences of the landscape over an organic meal for all to enjoy and learn from.

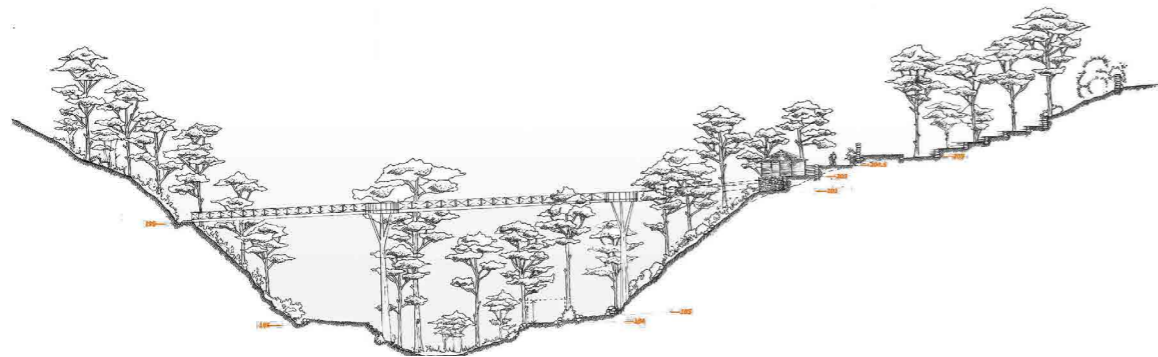
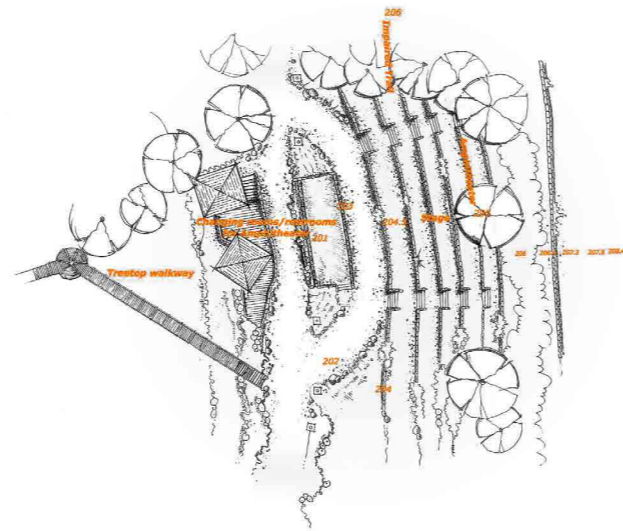


Area: 100,000 m<sup>2</sup>



rich biodiversity by developing a viable solution to the major highway that crosses its ranges, and we also managed to introduce sustainable activities within the forest, itself. The final design encompassed an in-depth study of the contextual Ecological Landscape Associations and offers the municipality the opportunity to preserve and enhance an all-inclusive, publicly-accessible semi-urban forest, all within a 20 minute drive from the capital, Beirut.

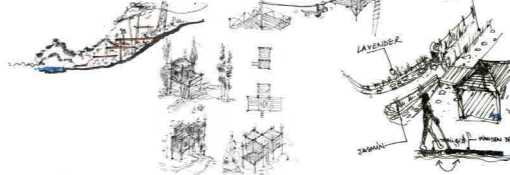




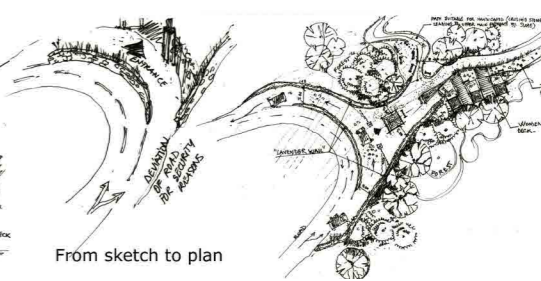
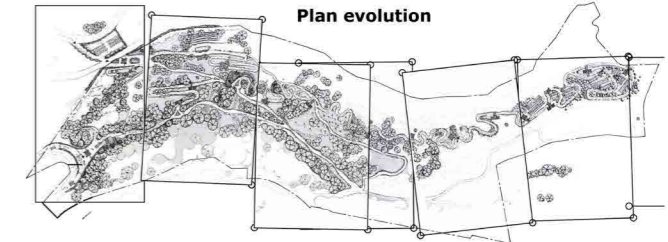
## Conceptual plans



## Area Blow ups



## Plan evolution



From sketch to plan



**scapeworks**  
landscape & urban design

For our latest updates:

[www.facebook.com/scapeworks](https://www.facebook.com/scapeworks)

[www.instagram.com/scapeworks](https://www.instagram.com/scapeworks)

[www.pinterest.com/scapeworks](https://www.pinterest.com/scapeworks)

[www.twitter.com/scapeworksLA](https://www.twitter.com/scapeworksLA)



**scapeworks**  
landscape & urban design

Jisr el Wati, Ferrari Building,  
3rd floor, Office 303,  
Beirut, Lebanon  
P.O. BOX 55 105  
Tel/Fax: +961 1 510 118

[www.scapeworks.co](http://www.scapeworks.co)